

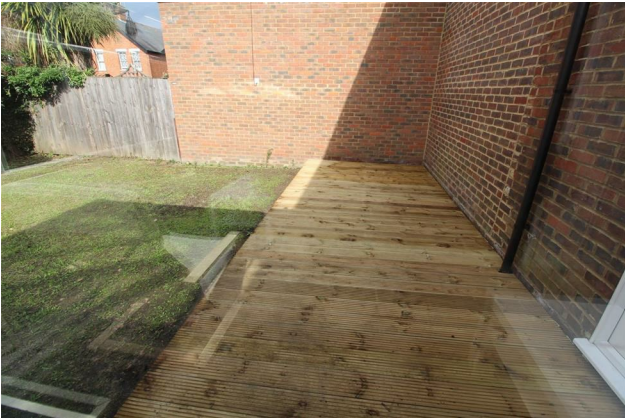
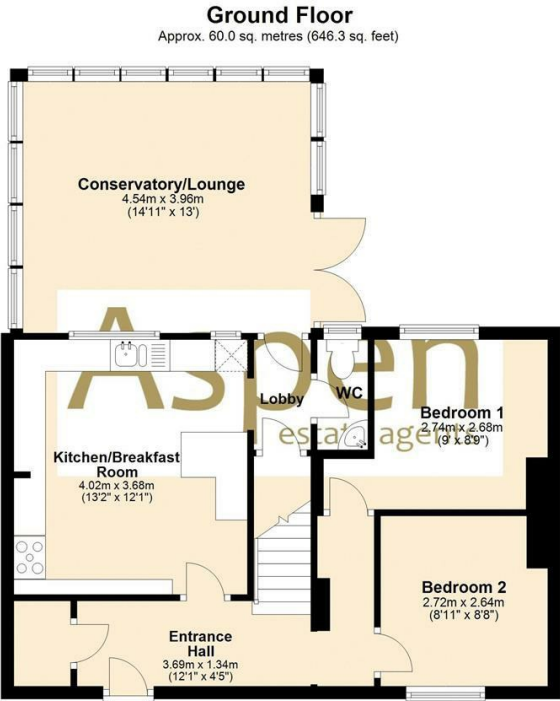


109 Spring Rise, Egham, TW20 9PE

A five bedroom student house with a fantastic kitchen/breakfast room with lots of appliances including a range style cooker. There is a downstairs cloakroom/w.c. upstairs bathroom, large conservatory with access onto the decking and small garden area and off street parking on the front. Located near local shops, train station and about 6-7 minutes walk to the back gates of the University. Energy Rating D.

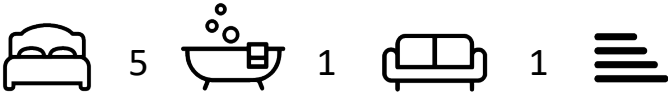


Floor Plan



Features

10 St Judes Road, Englefield Green, Surrey TW20 0BY
Tel 01784 433696
sales@aspenestateagents.co.uk



Tenure - Council Tax Band - D

